





INTELLI-GAUGE

HOW TO CUSTOMIZE SPLASH SCREEN



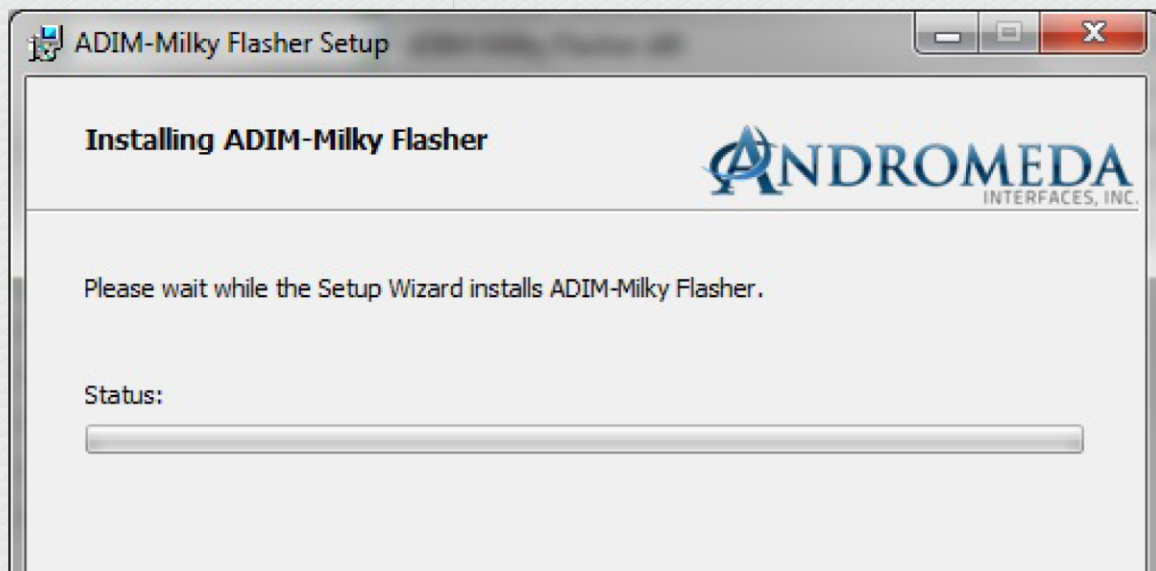
STEP 1: DOWNLOAD AND INSTALL SPLASHER TOOL

Following files below will be contained in the download(s).

 ADIM-Milky Flasher x64	9/21/2014 3:50 PM	Windows Installer ...	10,540 KB
 ADIM-Milky Flasher x86	9/21/2014 3:50 PM	Windows Installer ...	10,172 KB
 EBOOT.bin	9/9/2014 1:32 PM	BIN File	182 KB
 NK.bin	9/9/2014 1:38 PM	BIN File	30,253 KB
 XLDR_NAND.bin	9/9/2014 1:32 PM	BIN File	3 KB

INSTALLATION

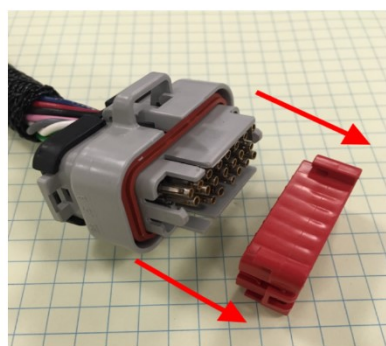
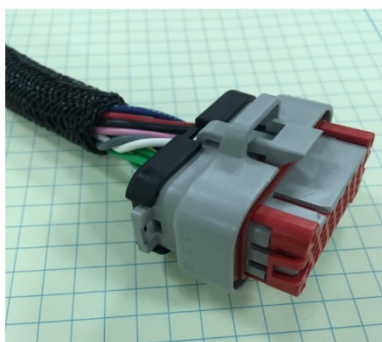
CHOOSE BETWEEN X86 OR X64 INSTALLERS
AND RUN THROUGH THE WIZARD.



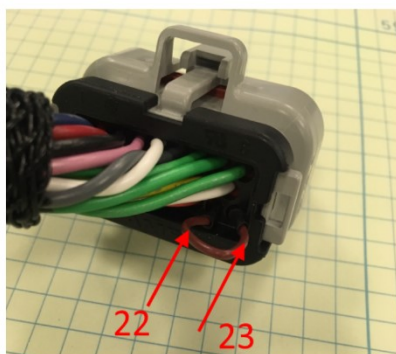
STEP 2: PREPARE IG HARDWARE

INSTALL BOOT JUMPER TO WIRING HARNESS

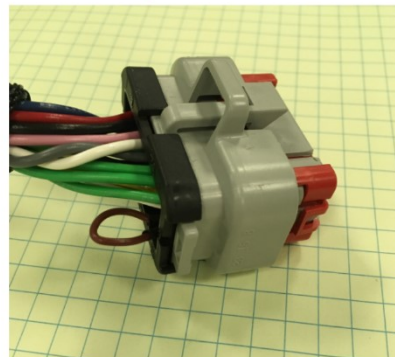
A. Remove harness clip from connector



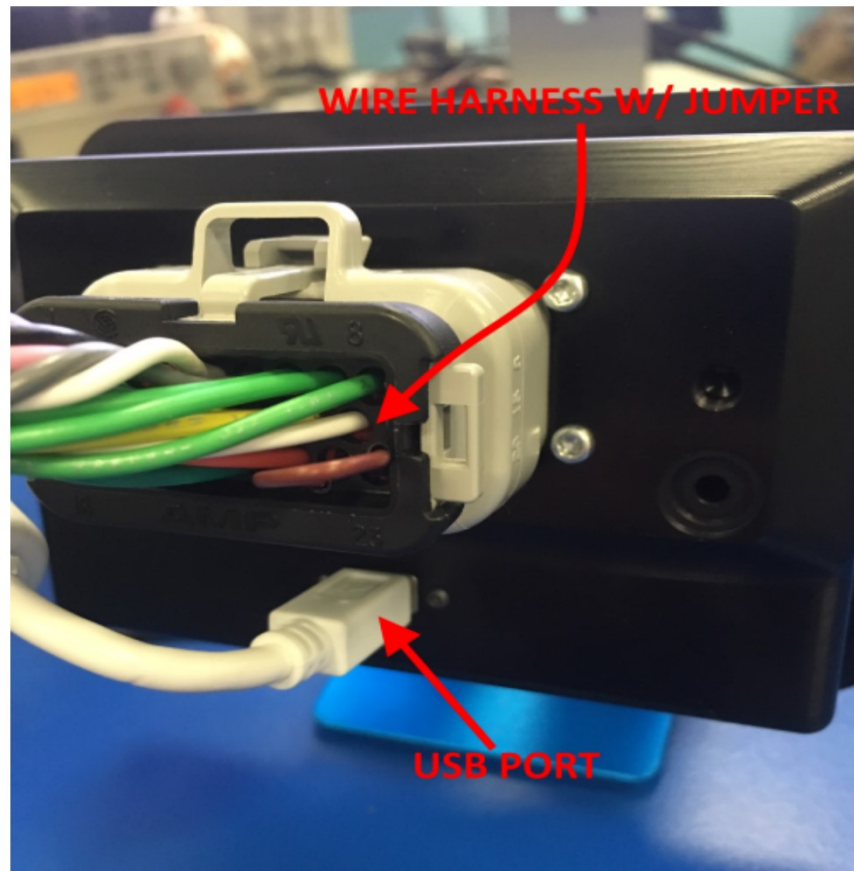
B. Insert Jumper to Pins 22 & 23



C. Place clip back on connector

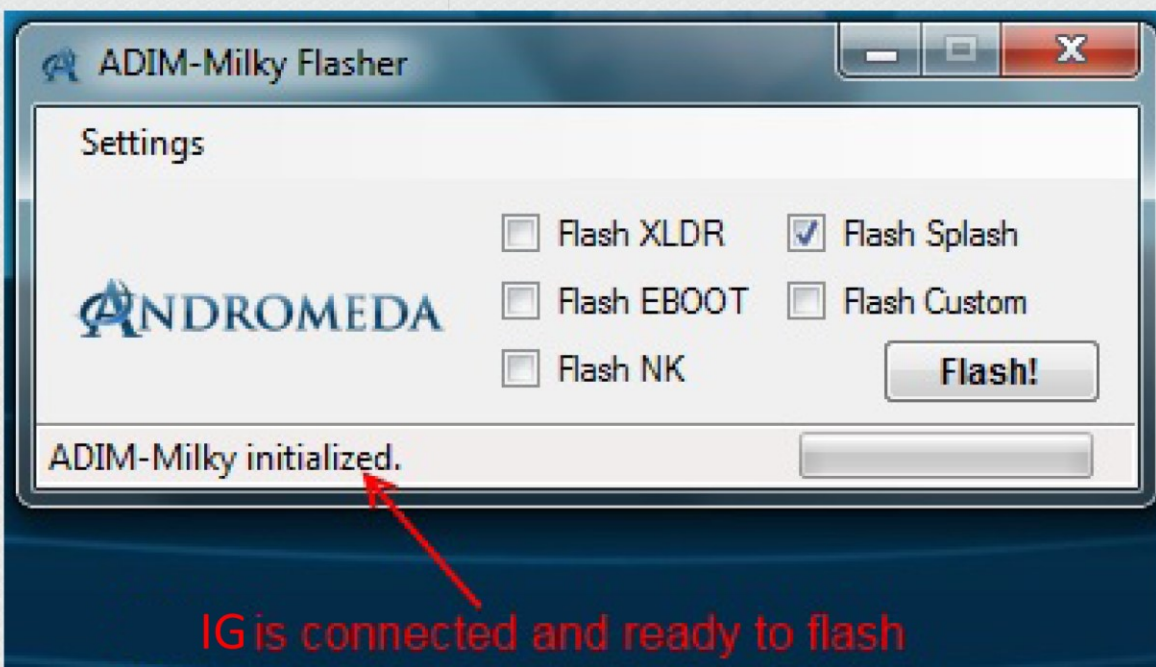


PLUG USB PORT FROM IG TO HOST COMPUTER

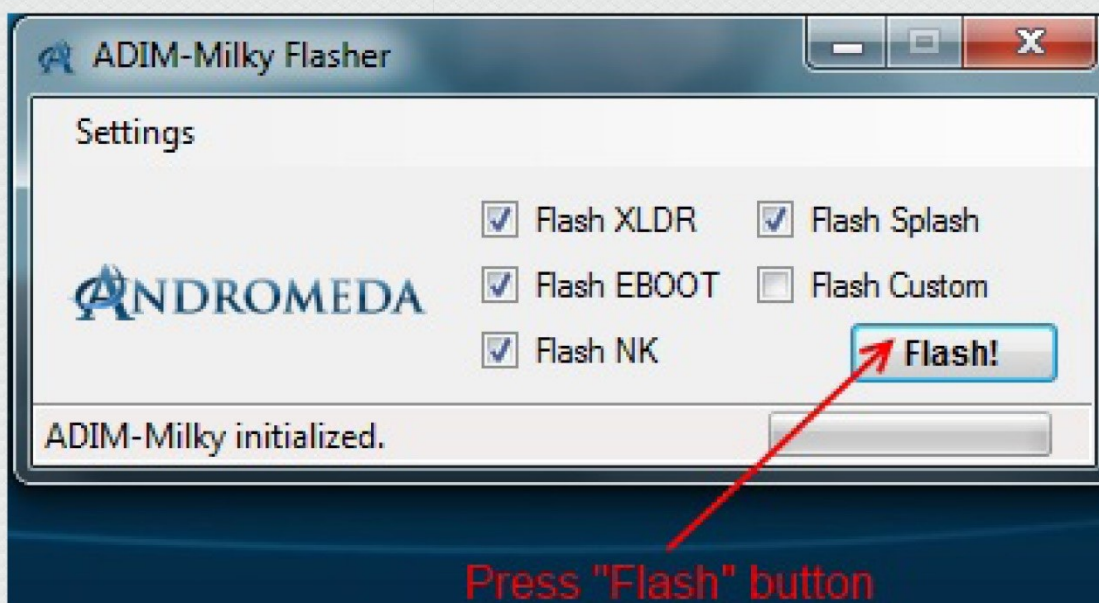
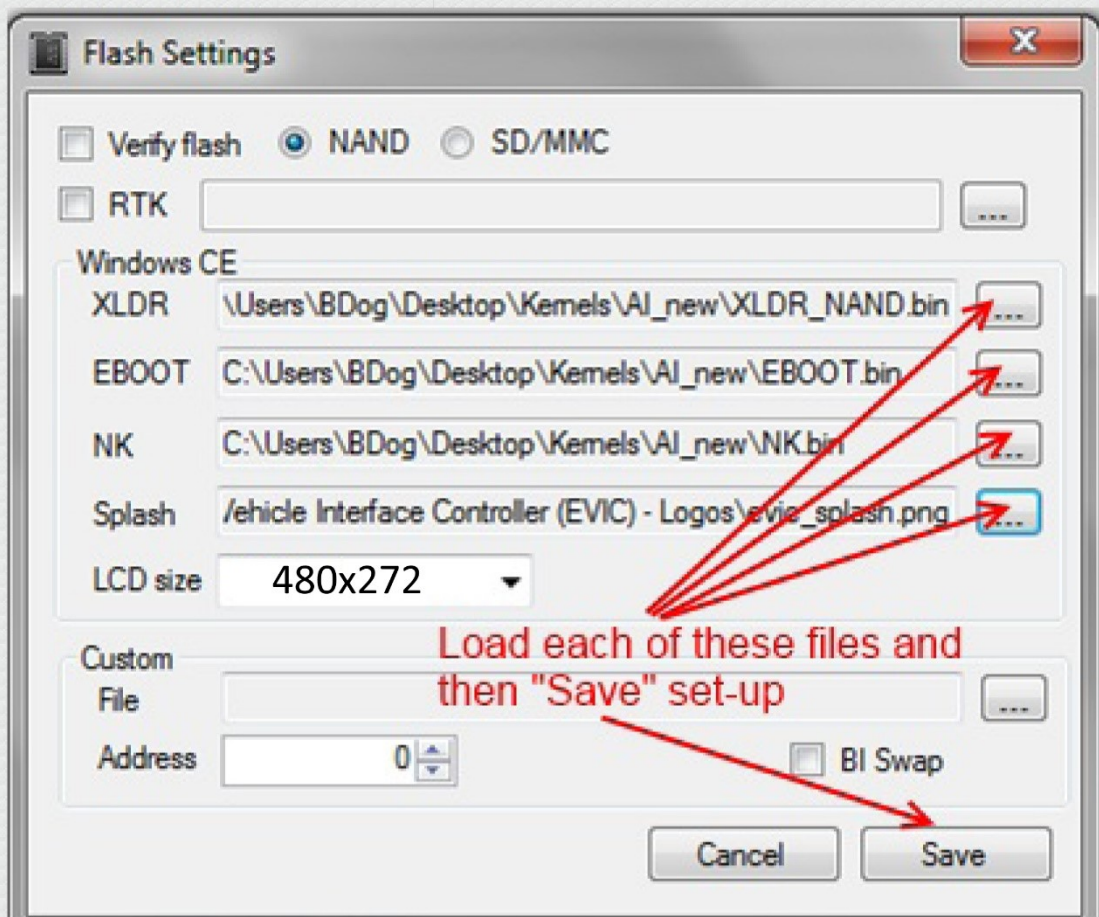


STEP 3: FLASH IG WITH SPLASHER TOOL

Power on IG and wait for splasher tool to connect.



You can choose any custom splash screen created and load it into the flash settings below. The custom splash screen resolution should be set to a pixel resolution of 480x272.

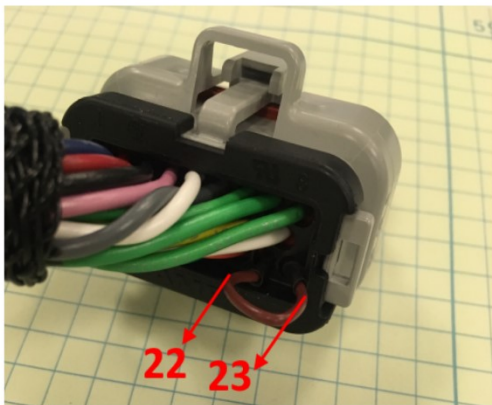


FLASHING IS COMPLETE ONCE REINITIALIZED.

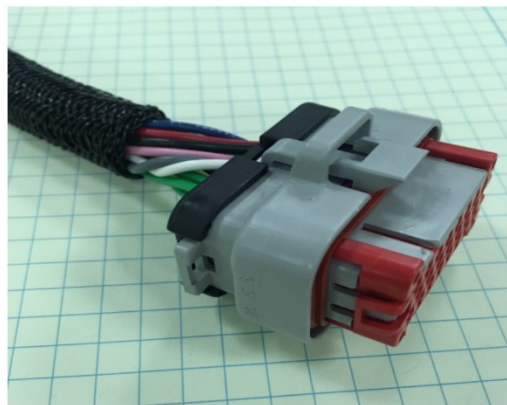
STEP 4: BOOT NEW SPLASH SCREEN

REMOVE BOOT JUMPER

A. Harness still in boot mode



B. Harness Ready for normal power up and communication



POWER ON IG AND YOUR CUSTOM
SPLASH SCREEN SHOULD NOW
APPEAR.



WHAT SHOULD YOU DO WHEN NOTHING ABOVE
GOES ACCORDING TO PLAN?



DON'T PANIC

We know the feeling.



SUPPORT

Our support team will work to
resolve your issues.



CONTACT US

Contact us at 877-332-6055

www.ai-hmi.com

Andromeda Interfaces, Inc. Copyright notice